

What happens if a student exhibits COVID symptoms on campus?

ILLUSTRATIVE



The school will not be responsible for diagnosing the student. The nurse will consult with Florida Department of Health and determine whether the student is a suspected case and proceed as if it were a confirmed case until proven otherwise.



1 In the classroom
The student is exhibiting a persistent cough every few minutes and tells his teacher he is starting to feel sick. Teacher calls the clinic nurse, who sends the assigned healthcare personnel from the isolation room to escort the student to the isolation room.

2 Isolation room assessment
The student and the isolation room nurse will be wearing PPE. The nurse will perform a focused assessment of this student (checks temp., pulse, oxygen level, and history of present illness) and calls the student's emergency contact to pick him up, if necessary. If student shows any signs of breathing issues or signs of distress the isolation room nurse will call 911.
Based on the nurses assessment, the isolation room nurse will report a suspected case to the FDOH immediately as well as inform the principal, and Coordinated Student Health Services. The nurse will determine if the student needs to be picked up by parent/guardian.

3 Symptomatic child picked up
The nurse/principal designee will retrieve student's siblings from their classroom and conduct a focused assessment.
To minimize exposure, the emergency contact (parent or other caregiver) stays in car and calls the school's office upon arrival. The parent will be requested to provide information to initiate contact tracing support to FDOH.
If student(s) is not picked up within an hour, school administrator will be notified and follow normal protocol.

4 Suspected case communicated and school cleaned
The isolation room nurse and school principal will consult with FDOH immediately and determine if the student should be quarantined and anyone else who may have been directly exposed.
If determined by FDOH, students and direct exposures should quarantine for 14 days. The principal will notify those individuals who may have had direct exposure to the suspected case (no names included) and recommend they monitor for symptoms, consult with healthcare provider, and get tested.
The nurse will follow up with the student's parent/guardian regarding student's disposition within 24-48 hours and provide resources.

5 Next Day
The suspected student(s) caretaker calls a local testing site from the Broward County online list and makes COVID testing appointment or visits a drive through testing site.
If any student identified as direct exposure did not receive the notification to quarantine and arrives at school, the student should be immediately escorted to the isolation room with PPE. The nurse will conduct a focused assessment and calls her caretakers to pick her up. The student shall remain in the isolation room supervised.

9B Positive Student Test Result
All family and direct exposures must continue to follow quarantine protocols.
The student's family schedules testing again once the student has stopped showing symptoms.
The entire family gets tested again and they all receive negative results a few days later.
The student and his siblings may return in-person after their quarantine/ isolation is completed.



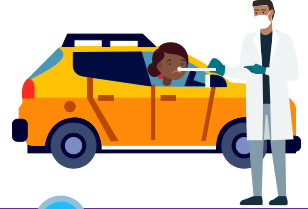
9A Negative Student Test Result
The student's caretakers send test results to the school nurse. The student has not completed quarantine requirements. It must be a minimum of 10 days since symptoms started. The student may not return to school until fever-free for 24 hours without fever-reducing medications, other symptoms have improved, 10 days since symptoms started, and 1 negative COVID-19 test result.



8 Test results received
5 days later the student's caretakers receive test results.



7 eLearning during quarantine
During quarantine students may participate in eLearning.



6 Testing site
The student's family drives to the testing site and gets COVID tested. Some children are COVID-19 positive without ever showing symptoms.

The entire school is power-cleaned that night, as standard daily protocols.